



Country Living is a registered trademark of Home & Heavy, an affiliate of Sunbrella, Inc.

COUNTRY LIVING™

SilverState fabrics™

 sunbrella™

Come Home to Comfort

SilverState *fabrics*[™] is delighted to introduce our newest artfully designed collection of Country Living fabrics featuring Sunbrella wovens. The Country Living collection brings the easy charm of country style to both outdoor and indoor living. Inspired by vintage flea market finds and classic country patterns, these wonderfully versatile fabrics are reinvented with a refreshing color palette and modern sensibility that will bring inviting comfort to any home. Made from 100 percent high performance Sunbrella acrylic, these fabrics are fade and stain resistant and easy to clean.

Celebrate the outdoors with Country Living!

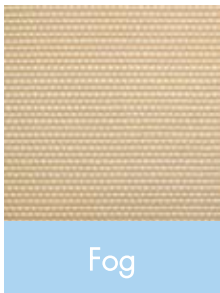
SilverState *fabrics*[™] offers a stunning, yet practical line of fabric and vinyl to suit a host of multiple applications: residential, commercial, healthcare, hospitality, automotive, and marine. SilverState fabrics are available in a host of textures, patterns and colors, many of which are designed to repel stains, moisture, mildew and bacteria. Where durability and fade resistance have to balance style, exclusivity and touch, we have led the way in the use of decorative fabrics for performance applications with such recognized brands as Sunbrella® and Crypton® as well as the environmentally intelligent, recycled and recyclable, Smart Life[™].

*Pictured on front cover: (Pillows) Handkerchief in Hyacinth and Paisley Scroll in Nectarine, (Cushion) Landmark Plaid in Hyacinth, (Fabrics from Left to Right) Magnolia in Nectarine, Gathering in Sorbet, Lattice Bloom in Nectarine, and Dahlia Garden in Watermelon
Pictured on opposite page (Clockwise from Top Left): Paisley Scroll in Navy, Handkerchief in Bandana Red, Legacy in Natural, Landmark Plaid in Navy, and Gathering in Americana*

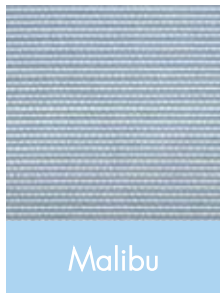


Beadboard

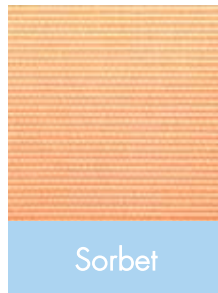
Cleverly inspired by a Country Living favorite, this fabric is as timeless as its namesake.



Fog



Malibu



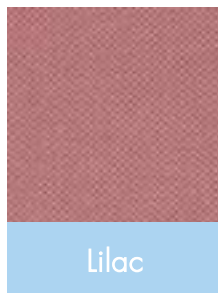
Sorbet

Product Details:

Width: 54"
Content: 100% Sunbrella® Acrylic
Finish: Soil and Stain Resistant
Repeat: H .33" V .66"
Cleaning Code: See Sunbrella Cleaning Instructions
Abrasion: 13,500 Double Rubs
Flammability: UFAC Class 1, Cal 117 Sec. E
Country of Origin: USA
Pattern: RAILROADED
Available in 3 Colorways

Bread Crumbs

Textured solid with a small lattice motif in three colors that coordinate with the collection.



Lilac



Lime



Truffle

Product Details:

Width: 54"
Content: 100% Sunbrella® Acrylic
Finish: Soil and Stain Resistant
Repeat: N/A
Cleaning Code: See Sunbrella Cleaning Instructions
Abrasion: 15,000 Double Rubs
Flammability: UFAC Class 1, Cal 117 Sec. E
Country of Origin: USA
Pattern: Up the roll
Available in 3 Colorways

Dahlia Garden

This multicolored pattern captures the beauty of a dahlia garden in bloom.



Driftwood



Honeydew



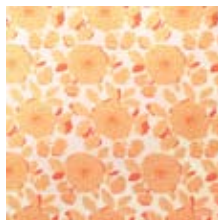
Linen



Sage



Sea Mist



Watermelon

Product Details:

Width: 52"

Content: 100% Sunbrella® Acrylic

Finish: Soil and Stain Resistant

Repeat: H 13.5" V 20.75"

Cleaning Code: See Sunbrella Cleaning Instructions

Abrasion: 12,000 Double Rubs

Flammability: UFAC Class 1, Cal 117 Sec. E

Country of Origin: USA

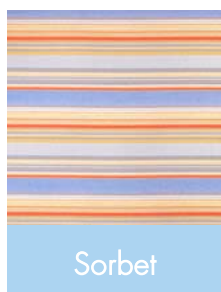
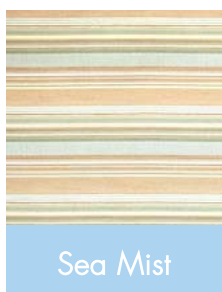
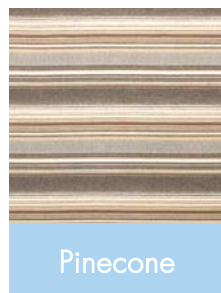
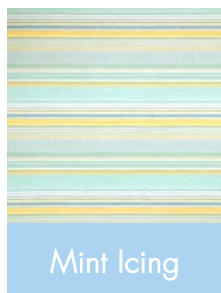
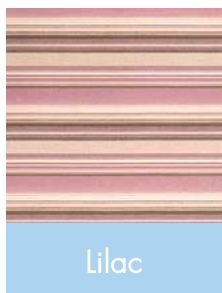
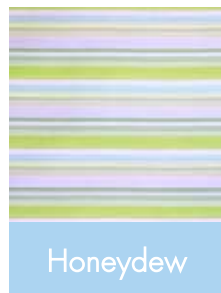
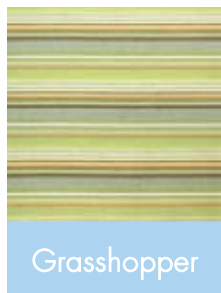
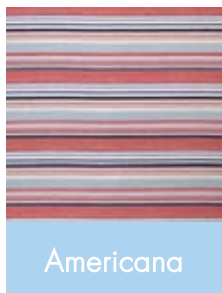
Pattern: Up the Roll

Available in 6 Colorways



Gathering

The perfect multi-colored pattern designed to coordinate beautifully with everything in the collection.



Product Details:

Width: 54"

Content: 100% Sunbrella® Acrylic

Finish: Soil and Stain Resistant

Repeat: H 0" V 6.3125"

Cleaning Code: See Sunbrella Cleaning Instructions

Abrasion: 12,000 Double Rubs

Flammability: UFAC Class 1, Cal 117 Sec. E

Country of Origin: USA

Pattern: RAILROADED

Available in 8 Colorways

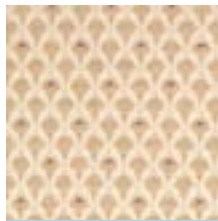


Dotted Lace

This multi-textured pattern inspired by vintage textiles offers the perfect backdrop for a summer afternoon.



Honeydew



Lilac



Sea Mist

Product Details:

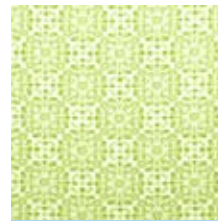
Width: 54"
 Content: 100% Sunbrella® Acrylic
 Finish: Soil and Stain Resistant
 Repeat: H 4.5" V 2"
 Cleaning Code: See Sunbrella Cleaning Instructions
 Abrasion: 18,000 Double Rubs
 Flammability: UFAC Class 1, Cal 117 Sec. E
 Country of Origin: USA
 Pattern: Up the roll
 Available in 3 Colorways

Handkerchief

Inspired by vintage handkerchief prints, this woven fabric is offered in a beautiful range of colors.



Bandana Red



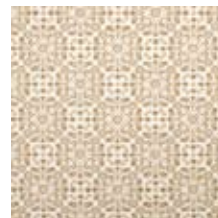
Cut Grass



Driftwood



Hyacinth



Linen



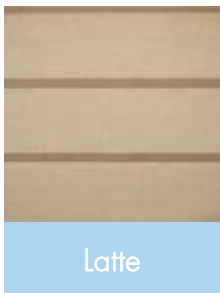
Mint Icing

Product Details:

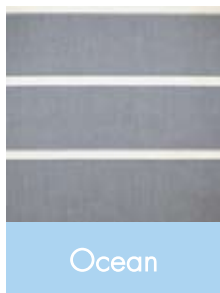
Width: 54"
 Content: 100% Sunbrella Acrylic
 Finish: Soil and Stain Resistant
 Repeat: H 4.5" V 4.5"
 Cleaning Code: See Sunbrella® Cleaning Instructions
 Abrasion: 12,000 Double Rubs
 Flammability: UFAC Class 1, Cal 117 Sec. E
 Country of Origin: USA
 Pattern: Up the roll
 Available in 6 Colorways

Harbor Stripe

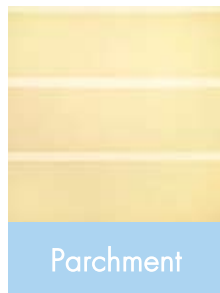
By the sea or on the deck, this simple nautical stripe creates the perfect base for layering all of your favorite patterns.



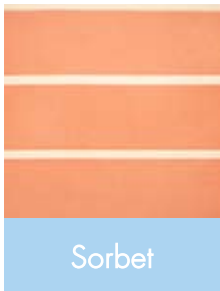
Latte



Ocean



Parchment



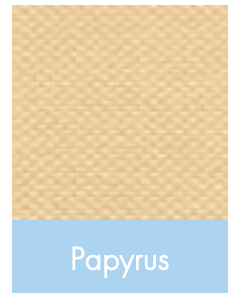
Sorbet

Product Details:

Width: 54"
Content: 100% Sunbrella® Acrylic
Finish: Soil and Stain Resistant
Repeat: H 0" V 6.72"
Cleaning Code: See Sunbrella Cleaning Instructions
Abrasion: 15,000 Double Rubs
Flammability: UFAC Class 1, Cal 117 Sec. E
Country of Origin: USA
Pattern: RAILROADED
Available in 4 Colorways

Lace Vine

Reminiscent of hand knotted antique lace, this solid fabric features unique texture and dimension.



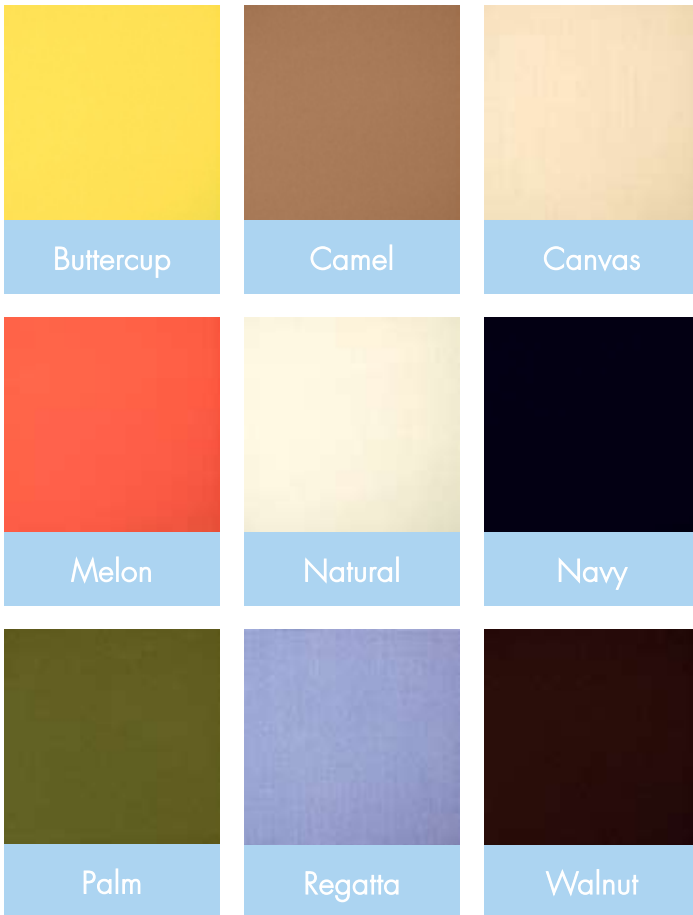
Papyrus

Product Details:

Width: 54"
Content: 100% Sunbrella® Acrylic
Finish: Soil and Stain Resistant
Repeat: H .375" V .5625"
Cleaning Code: See Sunbrella Cleaning Instructions
Abrasion: 15,000 Double Rubs
Flammability: UFAC Class 1, Cal 117 Sec. E
Country of Origin: USA
Pattern: RAILROADED
Available in 1 Colorway

Legacy

*Ottoman rib solid that looks like a finely woven men's shirt.
Mix and match with stripes and large graphic patterns.*



Product Details:

Width: 54"
Content: 100% Sunbrella® Acrylic
Finish: Soil and Stain Resistant
Repeat: N/A
Cleaning Code: See Sunbrella Cleaning Instructions
Abrasion: 15,000 Double Rubs
Flammability: UFAC Class 1, Cal 117 Sec. E
Country of Origin: USA
Pattern: Up the roll
Available in 10 Colorways



Landmark Plaid

Traditional yet bold, this wonderful plaid is offered in a classic palette to suit a range of décor styles.



Apple



Hyacinth



Linen



Navy



Potting Soil



Sea Mist

Product Details:

Width: 54"

Content: 100% Sunbrella® Acrylic

Finish: Soil and Stain Resistant

Repeat: H 9" V 9.5"

Cleaning Code: See Sunbrella Cleaning Instructions

Abrasion: 12,000 Double Rubs

Flammability: UFAC Class 1, Cal 117 Sec. E

Country of Origin: USA

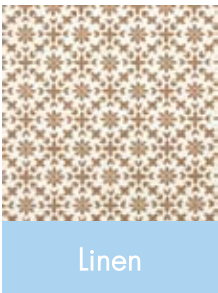
Pattern: Up the roll

Available in 6 Colorways

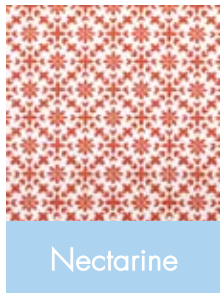


Lattice Bloom

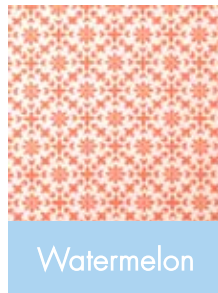
This vibrant, graphic interpretation of a traditional floral motif will add instant energy to any space.



Linen



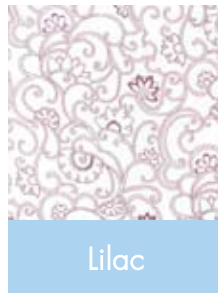
Nectarine



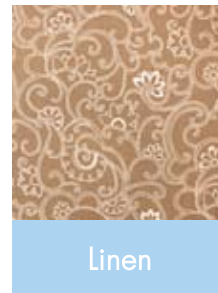
Watermelon

Paisley Scroll

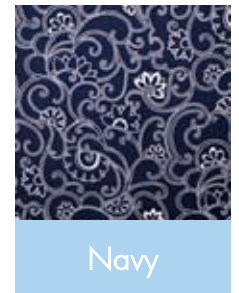
This traditional paisley features a whimsical pattern that will add an unexpected element to any room.



Lilac



Linen



Navy

Product Details:

Width: 54"
 Content: 100% Sunbrella® Acrylic
 Finish: Soil and Stain Resistant
 Repeat: H 2.5" V 2.875"
 Cleaning Code: See Sunbrella Cleaning Instructions
 Abrasion: 12,000 Double Rubs
 Flammability: UFAC Class 1, Cal 117 Sec. E
 Country of Origin: USA
 Pattern: Up the roll
 Available in 3 Colorways



Nectarine

Product Details:

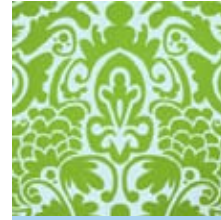
Width: 54"
 Content: 100% Sunbrella® Acrylic
 Finish: Soil and Stain Resistant
 Repeat: H 27" V 27.125"
 Cleaning Code: See Sunbrella Cleaning Instructions
 Abrasion: 12,000 Double Rubs
 Flammability: UFAC Class 1, Cal 117 Sec. E
 Country of Origin: USA
 Pattern: Up the roll
 Available in 4 Colorways

Magnolia

This bold damask will add show stopping style to any setting.



Driftwood



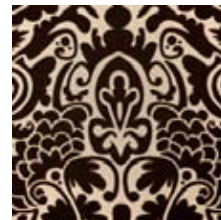
Honeydew



Hyacinth



Nectartine



Potting Soil



Sea Mist



Watermelon

Product Details:

Width: 54"

Content: 100% Sunbrella® Acrylic

Finish: Soil and Stain Resistant

Repeat: H 27" V 28.25"

Cleaning Code: See Sunbrella Cleaning Instructions

Abrasion: 12,000 Double Rubs

Flammability: UFAC Class 1, Cal 117 Sec. E

Country of Origin: USA

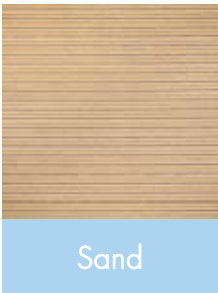
Pattern: Up the Roll

Available in 7 Colorways



Sowing Stripe

A classic nautical stripe that will never go out of style.

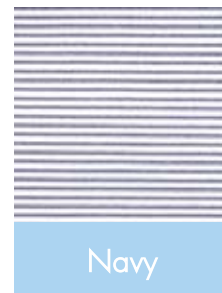
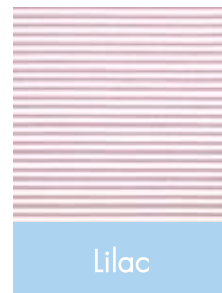
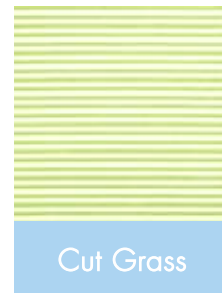
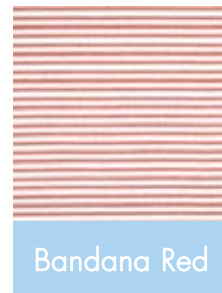


Product Details:

Width: 54"
Content: 100% Sunbrella® Acrylic
Finish: Soil and Stain Resistant
Repeat: H 0" V .867"
Cleaning Code: See Sunbrella Cleaning Instructions
Abrasion: 15,000 Double Rubs
Flammability: UFAC Class 1, Cal 117 Sec. E
Country of Origin: USA
Pattern: RAILROADED
Available in 1 Colorway

Ticking Stripe

One of the most iconic staples of country style, this timeless ticking stripe offers inherent mix and matchability.



Product Details:

Width: 54"
Content: 100% Sunbrella® Acrylic
Finish: Soil and Stain Resistant
Repeat: H 0" V .5"
Cleaning Code: See Sunbrella Cleaning Instructions
Abrasion: 12,000 Double Rubs
Flammability: UFAC Class 1, Cal 117 Sec. E
Country of Origin: USA
Pattern: RAILROADED
Available in 6 Colorways



Sunbrella® *fabric solutions for the home*

Sunbrella is a trusted name in dependable, functional colorfast fabrics. From outdoor furniture and awnings to convertible tops, Sunbrella has been supplying the world with lasting fabrics for over 40 years. Now Sunbrella wants to share with you its unique and amazing qualities!

Sunbrella fabrics are made of durable, all-weather Sunbrella acrylic. Resulting in a quality fabric that obtains the following characteristics:

- *feels soft and comfortable*
- *retains its color and strength*
- *withstands years of normal exposure to sunlight and rain*
- *resists mildew, rot, chlorine, and atmospheric chemicals*
- *cleans easily (see below)*

CLEANING INSTRUCTIONS

Most stains on Sunbrella fabrics can be cleaned with mild soap and water solution, but here are some other options:

- Spot wash by sponging briskly with a solution of natural soap in lukewarm water.
- Rinse thoroughly with clean water to remove soap and air dry.
- For stubborn stains, use fabric spot remover. Follow the directions on the container.
- For removable cushion covers, machine wash in cold water with a mild soap, air dry.
- Sunbrella acrylic does not promote mildew growth. However, mildew may grow on dirt and other foreign substances that are not removed from the fabric. To clean mildew stains, prepare a mild solution of one cup bleach and two capfuls of natural soap per gallon of water. Spray on entire area and allow to soak in. If necessary, scrub vigorously with sponge or clean rag. Sponge thoroughly with clean water and air dry.

For recommended cleaning of other stains visit: www.sunbrella.com

SUNBRELLA FURNITURE FABRICS 5 YEAR LIMITED WARRANTY

Glen Raven Custom Fabrics, LLC provides a limited warranty on Sunbrella brand fabric that has become unserviceable because of loss of color or strength from normal exposure conditions, including sunlight, mildew, rot, and atmospheric chemicals for a period of five years from the date of purchase. Glen Raven will supply new fabric, free of charge, to replace the fabric which becomes unserviceable.

To receive service, contact the dealer from whom you purchased the product to inspect the fabric. The dealer will in turn contact Glen Raven and secure replacement fabric for you.

Please note, our warranty policy is only valid if a sample of the fabric and a copy of the bill for item purchased is submitted.



Sunbrella® is a registered trademark of Glen Raven, Inc.

Pictured on opposite page (From Top Right to Bottom): Handkerchief in Hyacinth, Magnolia in Nectarine, Landmark Plaid in Hyacinth, Lattice Bloom in Watermelon, Legacy in Melon, and Dablia Garden in Watermelon

SilverState *fabrics*[™]

Silver State Inc.
1010 West 2610 South
Salt Lake City, Utah

Tel: 801.972.6770
Toll Free: 800.453.5777
Fax: 801.972.5005

www.silverstatefabrics.com